



ABBOTSFORD HOSPICE

& GRIEF SUPPORT SOCIETY

40

YEARS

*of Compassionate Care*

— 1985 - 2025 —





**BC FARM & RANCH  
REALTY CORP.**

BC's Leader in Agricultural  
Real Estate

*Susanne Walton*

House & Acreage Specialist

*Congratulations to Abbotsford Hospice on their 40th Anniversary!*

Abbotsford Hospice & Grief Support Society is so special because it has been providing compassionate support to families in our community when they need it most. For four decades, they have been bringing hope, comfort, and support to help care for those facing life's toughest challenges. Having experienced the loss of a loved one at an early age, I understand how meaningful it is for families to have support during such a difficult time.



**THANK YOU ABBOTSFORD HOSPICE & GRIEF SUPPORT SOCIETY!**





## Dear Friends and Supporters,

As we celebrate 40 years of compassionate care and hope, I am filled with gratitude for the incredible community that has stood beside Abbotsford Hospice & Grief Support Society since 1985. Your trust and support have allowed us to walk alongside thousands of families during life's most tender moments.

Over the past four decades, we have grown from a small vision into a cornerstone of care in Abbotsford. We have expanded programs, built spaces of comfort, and created a network of volunteers and professionals dedicated to dignity and compassion. Each milestone reflects the strength and love of this community.

The butterfly, our emblem of hope, reminds us that transformation and beauty can emerge even in times of loss. These symbols guide us as we look to the future.

As we step into the next chapter, our commitment remains unwavering: to provide exceptional palliative care, grief support, and education for generations to come. We invite you to continue this journey with us through volunteering, advocacy, and generosity so that every family can experience care that honours life.

Thank you for being part of our story. Together, we will keep hope alive.

With heartfelt appreciation,

**Andrea Critchley**

Executive Director

## A MESSAGE FROM OUR EXECUTIVE DIRECTOR



Abbotsford Hospice  
& Grief Support Society



# *40th Anniversary* CELEBRATION

"A NIGHT IN RED GALA"

April 11<sup>th</sup>, 2026

Reflections Banquet Hall

200 - 1779 Clearbrook Rd, Abbotsford

Join us for a beautiful evening dressed in red as we celebrate our 40th anniversary of providing compassionate care to the community.

Please RSVP using the QR code - spaces are limited this year.







# TABLE OF CONTENTS

- 6. Board of Directors
- 7. Garden of Hope
- 8. Our Beginning
- 10. Scholarships & Teen Training
- 11. Grief Support
- 13. Capital Campaign
- 15. Palliative & Training
- 16. Holmberg Family Legacy
- 18. Expansion of Programs
- 19. Annual Events
- 20. Testimonials
- 22. Volunteers & Staff



## WHY WE CREATED THIS MAGAZINE

This commemorative magazine celebrates Abbotsford Hospice & Grief Support Society's 40 year journey of compassion, care, and community. It is more than a publication, it is a keepsake honouring the families we've served, the volunteers and staff who have given their hearts, and the supporters who have sustained our mission. Through stories, milestones, and memories, we invite you to reflect on our past, celebrate the present, and join us in shaping a future filled with hope.



# GIVING IS NOT JUST ABOUT MAKING A DONATION

**It's about making a difference.**

Thank you to all the staff, volunteers and health care workers at Holmberg House who work tirelessly to make our community better.



Abbotsford Hospice  
& Grief Support Society

604-850-7522

[www.polarelectric.ca](http://www.polarelectric.ca)

1-2236 W. Railway St.,  
Abbotsford, BC



**POLAR**  
**ELECTRIC INC.**





# Abbotsford Hospice & Grief Support Society

## BOARD OF DIRECTORS



**Ryan Calder**  
Board Chair



**Kam Grewal**  
Vice Chair



**Fran Vanderpol**  
Secretary



**Harsimran Dhanoa**  
Treasurer



**Randy Ferrairo**  
Director



**Katie Syroid**  
Director



**Shawna Vandeven**  
Director



**Bharathi Sandhu**  
Director



**Jeevin Phagura**  
Director



**Dr. Gabriel Chu**  
Director



**Dr. Andrew Evans**  
Director



# Abbotsford HOSPICE FOUNDATION

## BOARD OF DIRECTORS



**Tyler Evans**  
Board Chair



**Cameron Wilson**  
Vice Chair



**Jon Eaton**  
Director



**Miriam Bozman**  
Director



**Mike McWhinney**  
Director



**Kerri Onken**  
Treasurer



**Gurjit Gill**  
Director



# GARDEN OF HOPE

At our last gala, our community came together in an incredible way, raising the funds needed to build the Garden of Hope, a beautiful outdoor space designed for reflection, peace, and connection. This garden now gives our residents and their families a place to sit in the sunshine, breathe in the fresh air, and find comfort in nature during life's most difficult moments. It is a space for quiet conversations, shared memories, and gentle healing, all made possible through the generosity of those who believe in our mission.

## THE VOICE OF BUSINESS



[www.abbotsfordchamber.com](http://www.abbotsfordchamber.com) | @abbotsfordchamber

*The Abbotsford Chamber has been leading, uniting and championing Abbotsford businesses for over 110 years.*

ADVOCATE.

BENEFIT.

CONNECT.



Give Where You

LIVE

Year End  
**GIVING**  
**DOUBLE**  
YOUR GIFT!

[abbotsfordhospice.org/give](http://abbotsfordhospice.org/give)





# OUR BEGINNING:

## THE STORY OF ABBOTSFORD HOSPICE

In the early 1980s, a small group of compassionate community members recognized a profound need: to provide dignity, comfort, and support for those facing life's final journey. From this vision, a beacon of hope for families navigating end-of-life care and grief was born.

With limited resources but limitless dedication, volunteers began meeting in living rooms and community halls, offering care and companionship to individuals in their homes. These humble beginnings laid the foundation for a service that would grow to touch thousands of lives.

Through the generosity of donors and the tireless efforts of volunteers, Abbotsford Hospice expanded its programs and opened spaces of comfort and care. Each milestone reflected the strength of a community united by compassion and a shared belief that every life deserves dignity.

What began as a dream has become a cornerstone of care in Abbotsford. Today, we honour the visionaries who started this journey and the community that supports it, ensuring that hope and compassion remain at the heart of everything we do.

"From humble beginnings,  
a legacy of compassion was born."







# AHGSS Timeline:

Abbotsford Hospice & Grief Support Society

**1985:** Abbotsford Hospice Society was formed as a non-profit society by a diverse group, including doctors, pastors and other members in our community who saw an important need. They started a small office in McCallum Tower, Abbotsford.

**1992:** The Abbotsford Palliative Care Program began in conjunction with MSA Hospice, Continuing Care, and AHS.

**1999:** AHS purchased the house and 1-acre plot of land on Marshall Road and Ware Street.

**2009:** AHS teamed up with Matthew's House and Canuck Place to form the Campus of Care and in 2010 signed a 99 year lease with the city of Abbotsford for the current location on Marshall Road.

**2011:** The Official Naming of Holmberg House takes place with a Naming Ceremony that includes the Holmberg family, city dignitaries and guests.

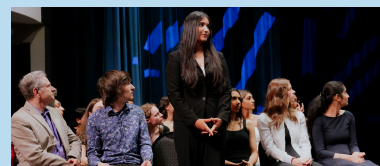
**2016:** Marks the grand opening of Holmberg House, Abbotsford's first and only hospice.

**2023:** AHS changes its name to AHGSS (Abbotsford Hospice & Grief Support Society) to better reflect the vital work we do in the community.



# SCHOLARSHIPS & TEEN PEER GRIEF SUPPORT TRAINING

This year marked an exciting milestone for our organization as we awarded scholarships for the very first time and hosted a special evening celebrating the incredible young people who completed our Teen Training Program. These youth represent the future of compassionate care in our community, and their dedication, empathy, and willingness to learn remind us that the spirit of hospice truly begins with the next generation.



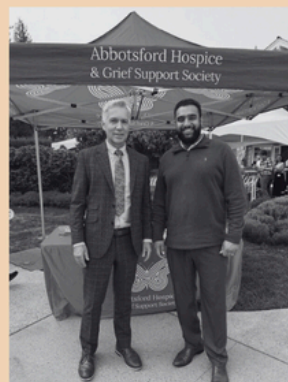
## Sukhman Gill

Conservative Member of Parliament  
Abbotsford-South Langley



"I am thrilled to support the Abbotsford Hospice Society on their 40<sup>th</sup> Anniversary. This organization embodies what it means to have human empathy.

I am grateful for the noble work they do to serve our most vulnerable and elderly."





# GRIEF SUPPORT



At Abbotsford Hospice and Grief Support Society, we walk alongside individuals and families as they navigate loss at every stage of life. Our grief support programs serve children, teens, and adults, offering safe and compassionate spaces to share, heal, and find hope again. Through one-to-one, group sessions, and peer support, we help people understand that grief looks different for everyone and that no one has to go through it alone. From play-based sessions for children to guided discussions for adults, our programs are designed to meet people where they are with care and understanding.

**Happy 40th Anniversary Abbotsford Hospice**  
***Thank You For All You Do  
in Our Community.***

 **THE NEWS**  
ABBOTSFORD

100B-2860 Trethewey Street, Abbotsford BC, V2T 0G5 | [abbynews.com](http://abbynews.com)

PRINT / DIGITAL / SOCIAL MEDIA MARKETING SOLUTIONS

**Abbotsford's Trusted Community News Source.**

**Anytime. Anywhere.**



# 35

## YEARS

*of helping build a strong community*

**SAXON**  
MECHANICAL LIMITED

**SAXON**  
SERVICE INC.

info@ saxonmechanical.com | 604-853-4790





# CAPITAL CAMPAIGN:

## BUILDING HOLMBERG HOUSE (2011-2016)

The story of Holmberg House began long before its doors opened. For decades, Abbotsford Hospice and Grief Support Society dreamed of creating a hospice residence for our community, a place where families could receive compassionate end-of-life care in a home-like setting. That vision became a shared mission built on the belief that no family in Abbotsford should face life's hardest moments alone. Years of planning, fundraising, and dedication from volunteers, donors, local businesses, and the Holmberg family turned that dream into reality, transforming an empty piece of land into a warm and welcoming home filled with care and connection.

When Holmberg House opened, it stood as more than a building. It represented countless acts of kindness and a promise kept to families in need of peace and comfort. Every room reflects the compassion of those who believed in this mission. Today, your support continues that legacy, ensuring that Holmberg House remains a place of dignity, love, and hope for generations to come.







As we celebrate forty years of compassionate care, we look ahead to the next forty with hope and determination. Your continued support ensures that Abbotsford Hospice and Grief Support Society can keep providing comfort, dignity, and love to every family who needs it.

Join us in shaping the future of hospice care in our community.

Scan the QR code to donate, get involved, or learn more about how you can make a difference.

### Donate by phone, mail or in-person

To make a donation by phone using your credit card, please call us at: **604-852-2456** - 8:30 am to 4:30 pm Monday to Friday.

To donate by mail or in-person, drop by our office or send a cheque made payable to "Abbotsford Hospice & Grief Support Society" at:

Abbotsford Hospice & Grief Support Society  
32780 Marshall Road Abbotsford, BC V2S 1J7

[www.abbotsfordhospice.org/give](http://www.abbotsfordhospice.org/give)





Our palliative programs provide comfort, dignity, and compassionate presence to those nearing the end of life. Residents and families receive support that extends beyond medical care, focusing on emotional, spiritual, and practical needs. Alongside this, our extensive training programs equip volunteers, caregivers, and professionals with the knowledge and empathy needed to serve with confidence and heart. Through ongoing education and community outreach, we ensure that the values of hospice, compassion, respect, and humanity continue to guide the care we provide throughout Abbotsford and beyond.

## PALLIATIVE & TRAINING



## Congratulations



**We are proud to congratulate the Abbotsford Hospice and Grief Support Society on 40 years of serving our community.**

**For four decades, you have provided compassionate end-of-life care and exceptional support to families navigating grief during some of life's most difficult moments. Your work offers comfort, dignity and hope to those who need it most.**

**Thank you for your unwavering commitment to Abbotsford families, and for creating spaces where our community can find peace, compassion and comfort.**

**Here's to 40 years of care and to many more years of healing hearts in Abbotsford.**





# The Holmberg Legacy

In 2011, the announcement of a B.C. Government grant of 3.5 million dollars served to augment the extensive personal financial contributions and tireless fundraising activities of David and Lee Holmberg. The name of the new adult hospice, Holmberg House, was intended to honour the life and legacy of David Holmberg Jr., their son, who died of cancer in 2011 at the age of 48. Additionally, financial support came from all parts of the community that included businesses, service organizations, and individuals.

**We are very grateful to the Holmberg Family who have played such an integral part and gave generously of their time and resources to ensure that Holmberg House became a reality and that it would be available to serve the people of Abbotsford.**

Dave Holmberg Sr. passed away in 2017 and his wife, Lee, only one year later, in 2018. Both were avid golfers and generous supporters of Ledgeview Golf & Country Club. The Holmberg Memorial Golf Classic was started in their honour and raises funds each year to support their legacy at the Abbotsford Hospice and Grief Support Society.

The Holmberg family experienced a profound loss in 2023 when their beloved son Nicholas passed away unexpectedly at the young age of 30. Known for his kind heart, determination, and unwavering love for this family, Nicholas touched the lives of many.

In late 2024, AHGSS created a scholarship to honor Nicholas' life and legacy, with the hope that it will inspire other youth and keep his bright spirit alive.







Abbottsford Hospice  
& Grief Support Society

40th anniversary

## 2025 Fast Facts Sheet

Serving the

community  
since 1985

# 31,077

Total individuals impacted  
through AHGSS  
programs and services

TOTAL  
Volunteer Hours  
**11,326**

Youth  
Scholarship  
Recipients  
**24**

Palliative  
Volunteer hours at  
PCCU & Holmberg  
House hospice  
**3,601**

Children & Youth  
Grief Support Program  
**12,069\***

Individuals admitted to  
Holmberg House hospice  
and cared for at PCCU \*\*  
**400**

\*\*Actual recorded number and  
may not include those who chose  
to have a home death or those who  
passed away in Emerg

Active AHGSS  
Volunteers  
**235**

Teen training  
graduates  
**76**

Adult Grief  
Support Program  
**8,730**

Community Grief  
Support Training  
**5,220**  
\*

AHGSS Volunteers  
trained  
**86**

\*\*Students from the Abbotsford  
School District aligned with  
Capstone Graduation Program

\*For each client served, 9 members of the client's personal circle are directly impacted - taken from the  
BC Hospice Palliative Care Association 2021 Provincial & Territorial Grief and Bereavement Report\*

For more Information

604-852-2456  
[www.abbotsfordhospice.org/](http://www.abbotsfordhospice.org/)



# thank you

Abbottsford Hospice & Grief Support Society for your 40 years  
of caring service to our community.



33050 South Fraser Way, Abbotsford 604-853-6471



## EXPANSION OF PROGRAMS

(2020-2025)

Over the past five years, Abbotsford Hospice and Grief Support Society has undergone remarkable growth and transformation. Our name change to Abbotsford Hospice and Grief Support Society reflects our expanded focus on comprehensive grief care for individuals of all ages. We have invested heavily in training and education, equipping our team and volunteers with the skills needed to support a wide range of grief experiences. Our services have extended beyond our walls into the broader community, including schools across the district, local nonprofits, businesses, health care partners, and long-term care homes. We have also expanded our programming to ensure cultural relevance, meeting the diverse needs of the communities that call Abbotsford home. In the past three years alone, our volunteer team has tripled, reflecting a growing desire within our community to walk alongside those experiencing loss and grief.

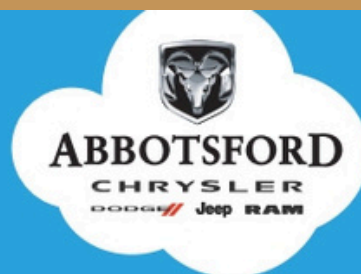


Each year, Abbotsford Hospice and Grief Support Society brings the community together through a series of meaningful and uplifting events that celebrate compassion and connection. The Moments of Hope Gala, Holmberg Memorial Golf Classic, and Horsepower for Hospice Cruise-In are more than just fundraisers; they are gatherings of people who believe in the power of care and community. Alongside these celebrations, we also host heartfelt memorial events such as the Butterfly Release Memorial, which provide families with a space to remember, reflect, and heal together. These events raise vital funds that allow us to provide programs and services at no cost to those in need, while also creating opportunities for families, sponsors, and supporters to come together in support of a cause that touches so many lives.

# ANNUAL EVENTS



Supporting  
Our Community



**CANADA'S BEST WARRANTY**  
10-YEAR / 160,000 KM WARRANTY.

30285 AUTOMALL DR, ABBOTSFORD, BC | (604) 857-8888



**2026 Ram 1500 Express**



**2026 Ram 3500 Limited**



# TESTIMONIALS

"We are so grateful to you, Andrea, and Abbotsford Hospice for the beautiful care extended to my Dad and my Mom. Thank you from the bottom of my heart We were so grateful he passed peacefully at hospice. I was with him when he took his last breath. What an honour. Thank you for all your love and care for our family. Truly a gift to all of us."

- Shauna P

"Our family would like to thank the Doctors, Nurses and all the other staff & volunteers for their very compassionate care during our two week stay at Abbotsford Hospice.

We recognize the thoughtful and respectful attention provided allowed him to experience a dignified and peaceful journey to a "better place". Our family felt well supported with the care and compassion that was further extended towards us. Words cannot express our gratitude enough."

Sincerely,

- Fatkin Family



Abbotsford Hospice  
& Grief Support Society

## Congratulations on 40 years!

Since 1985, Abbotsford Hospice & Grief Support Society (AHGSS) has provided compassionate end-of-life care and grief support to our community.

Thanks to generous donors, Holmberg House continues to offer palliative care, grief programs, and education for families and volunteers!



33058 First Avenue 20  
604-814-5710  
BRAD.VIS@PARL.GC.CA





# HELP YOUR BUSINESS **STAND OUT** **BY HIGHLIGHTING YOUR BRAND!**

Strengthen your brand through signages and promotional products that helps your brand stay visible, memorable, and top of mind with customers. It's not just marketing—it's building recognition, trust, and lasting connections with your audience.



## WE CAN HELP

604-504-1677

info@allegraabbotsford.com

www.AllegraAbbotsford.com



101, 33425 Maclure Road  
Abbotsford, BC V2S 0C4



**M** Maple Orient



Excellent customer service and quality always. Allegra Abbotsford don't disappoint us ever- tight timelines, next day deliveries, best prices, you name it-they got us covered! You're the best!



**Plakilla Sandell**



We began working with Allegra for our direct mail campaigns. In a very short time Allegra became less of a vendor to us and more of a partner. They understand our timelines and work well alongside us to achieve our marketing goals. The quality of work excellent and customer service is 5-star





“As staff, we have the privilege of walking beside people during the most vulnerable moments of their lives. Every day, I am reminded that compassion is not something we give once, but something we offer again and again with gentleness. This work changes you, and it is an honour to be part of it.” - Susanne Fehr (Palliative)

**We could not do this work without our volunteers & staff. Their compassion, dedication, and willingness to show up for others form the heart of everything we do.**

“In grief support, we meet people at their most tender and fragile moments. Our role is not to fix their grief, but to walk beside them as they navigate it. Watching someone slowly find their footing again, even after the deepest heartbreak, is a reminder of how powerful compassionate presence can be.” - Veronica Tod (Bereavement)





**“OH FFF....  
Fix Auto!”**

The first words that  
should come to mind  
after an accident.



**Fix Auto Abbotsford East**

2001 Abbotsford Way | 604.852.4677

[fixauto.com/abbotsford](http://fixauto.com/abbotsford)

**[fixauto.com](http://fixauto.com)**

**Call us today to get your FREE ESTIMATE!**



## Congratulations to Abbotsford Hospice on 40 Years!

Reimer Hardwoods is proud to support the vital work you do for families in our community. Thank you for the difference you make every day.



[www.reimerhardwoods.com](http://www.reimerhardwoods.com)

### LOCATIONS:

- ABBOTSFORD
- KELOWNA
- CALGARY
- VICTORIA



**REIMER  
HARDWOODS**

*3 Generations of Service  
A Shared Commitment to Value*